

SECCED®

REACH PLUS 5 Fluid Head Tripod Maintenance Manual

Version 1

March.15.2013



Copyright © 2013, Beijing United Victory Co., Ltd

All rights reserved throughout the world. No part of this document may be stored in a retrieval system, transmitted, copied or reproduced in any way including, but not limited to, photocopy, photograph, magnetic or other record without the prior agreement and permission in writing of Beijing United Victory Co., Ltd
Secced is registered trademark of Beijing United Victory Co., Ltd

. Publisher: Beijing United Victory Co., Ltd
Website: www.secced.com

REACH PLUS 5 Fluid Head Illustrated Parts List

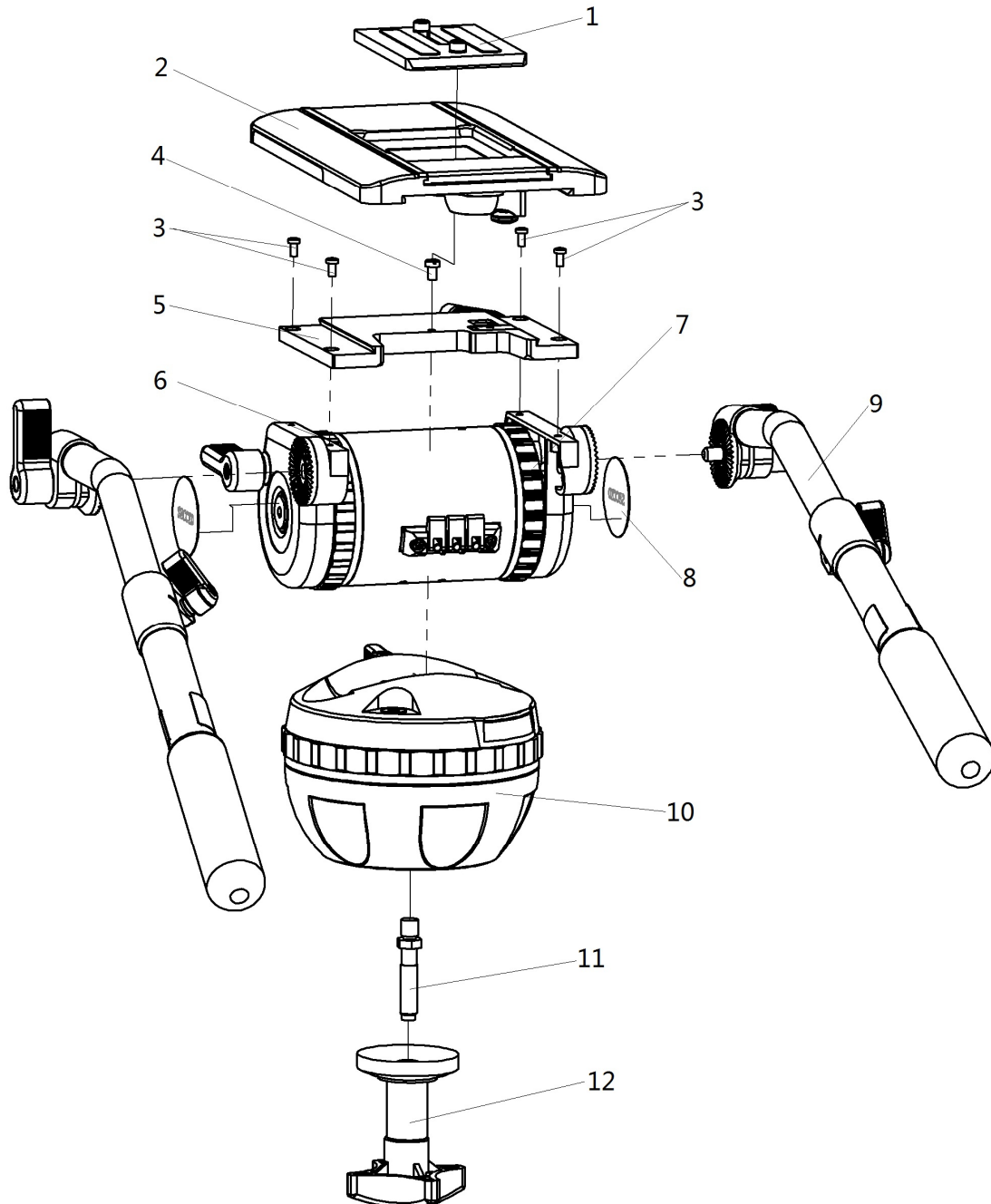


Fig. 1: REACH PLUS 5 Fluid Head

Item No.	Part No.	Nomenclature	Qty.
Fig. 1	SC351A-00	REACH Plus 5 Fluid Head	
1	SC351-00-12	Wedge plate unit	1
2	SC351-00-05	Sliding plate unit	1
3	GB/T818-2000	Screw, pan head, pozidriv, M4x8	4
4	GB/T65-2000	Screw, Cheese head, Slotted M4x8	1
5	SC351A-00-10	Slide plate lock unit	1
6	SC351A-00-03	Tilt Brake and Drag unit assembly	1
7	SC351A-00-02	Balance Mechanism Assembly	1
8	SC351A-00-00-01	Fluid Head Logo	2
9	SC351-00-14	Pan Bar Unit Assembly	2
10	SC351A-00-04	Pan unit assembly- Pan Drag	1
11	SC326-00-00-03	Bowl clamp shaft	1
12	SC346-00-09	Bowl clamp knob	1

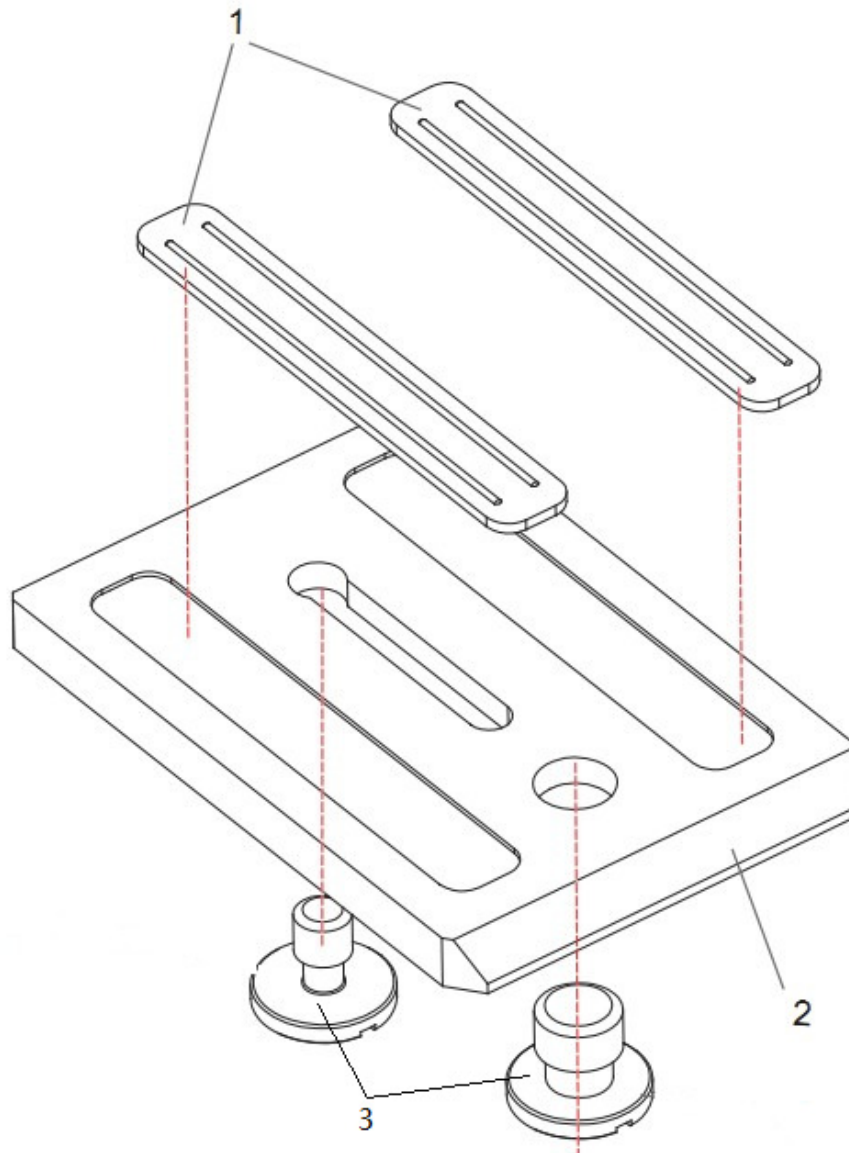


Fig.2: REACH PLUS 5 Fluid Head —Wedge Plate Unit Assembly

Item No.	Part No.	Nomenclature	Qty.
Fig. 2	SC351-00-12	Wedge Plate Unit Assembly	
1	SC325-00-09-02	Non-slip plate, leather	2
2	SC351-00-12-01	Wedge plate	1
3	SC324-00-12-03	3/8" Screw	2

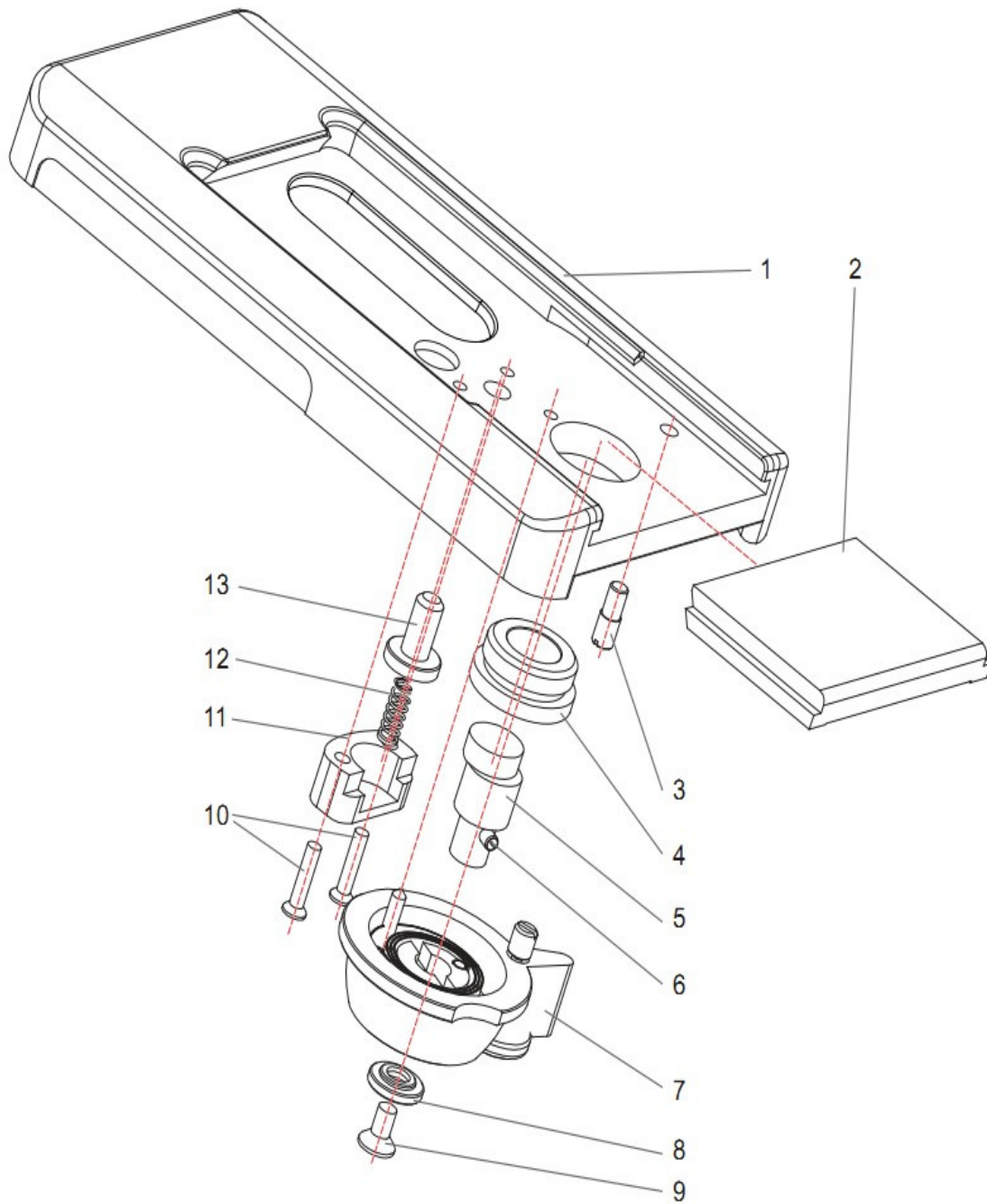


Fig. 3: REACH PLUS 5 Fluid Head—Sliding Plate Unit Assembly

Item No.	Part No.	Nomenclature	Qty.
Fig. 3	SC351-00-05	Sliding Plate Unit Assembly	
1	SC351-00-05-01	Slide plate	1
2	SC351-00-05-02	Wedge plate block	1
3	P-TS-4 X12	Pin, thread, slotted 4X12	1
4	SC324-00-05-03	Axle sleeve	1
5	SC334-00-06-06	Eccentric axle	1
6	P-SS-3 X14	Pin, spring-type, slotted, 3X14	1
7	SC324-00-11	Quick release knob Assembly	1
8	SC334-00-06-08	Washer	1
9	S-PCO-4 X8	Screw, csk head, pozidriv, 4 X8	1
10	S-PCO-3 X12	Screw, csk head, pozidriv, 3x12	2
11	SC324-00-05-05	Pressing pad	1
12	SC324-00-05-07	Spring for control pillar	1
13	SC324-00-05-06	Wedge plate control pillar	1

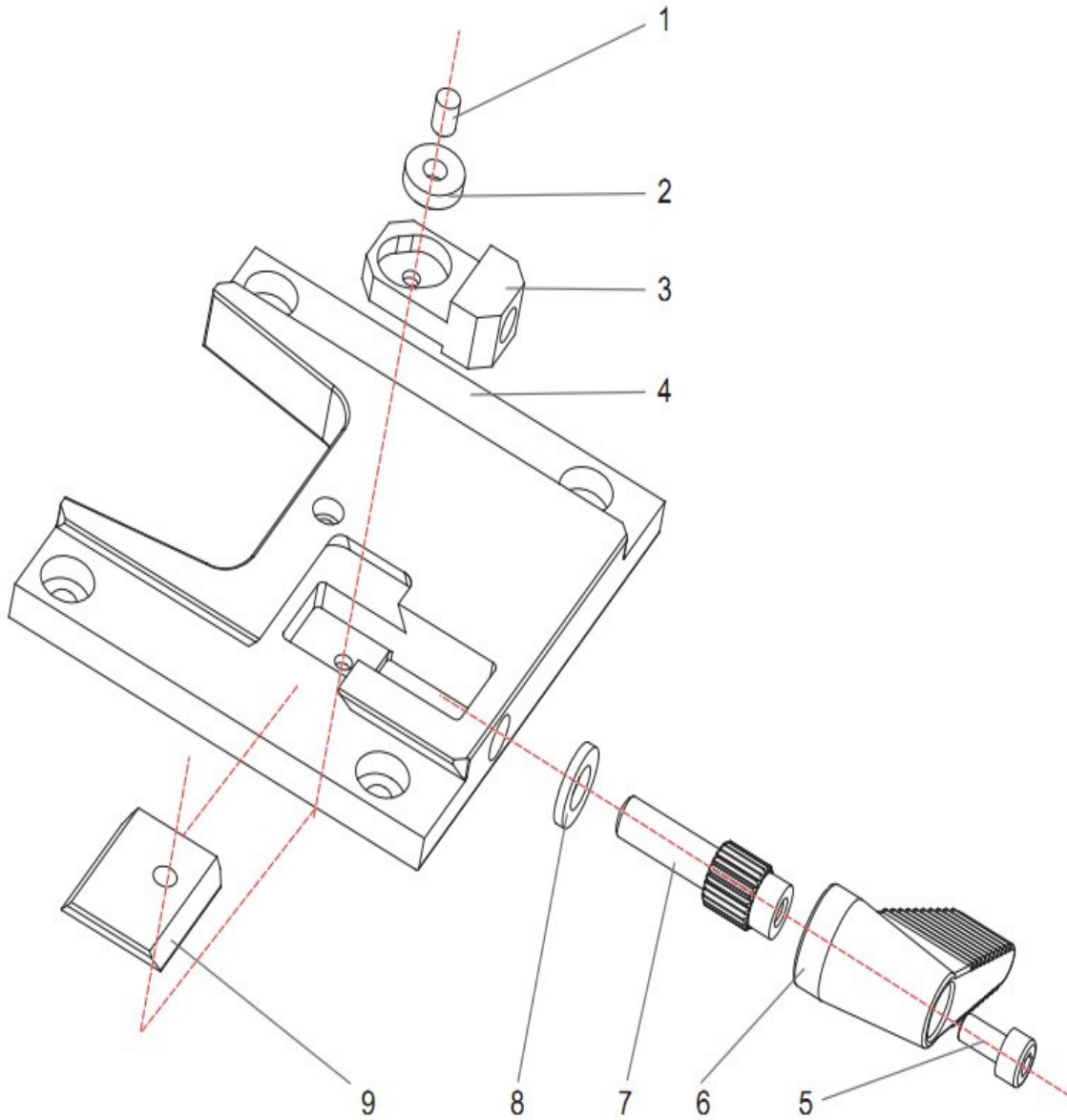


Fig.4: REACH PLUS 5 Fluid Head —Slide Plate Lock Assembly

Item No.	Part No.	Nomenclature	Qty.
Fig. 4	SC351A-00-10	Slide Plate Lock Assembly	
1	SC324-00-10-04	Pin	1
2	SC324-00-10-05	Shaft sleeve	1
3	SC343-00-10-07	Sliding clamp pad	1
4	SC351A-00-10-01	Dovetail-formed plate	1
5	GBT70NYM4X8	Screw, cheese head, hex socket, M3x6	1
6	SC324-00-10-07	Slide plate clamp	1
7	SC349-00-10-02	Slide plate clamp shaft	1
8	W-P-6	Washer, plain, 6	1
9	SC344-00-10-02	Slide plate clamp pad	1

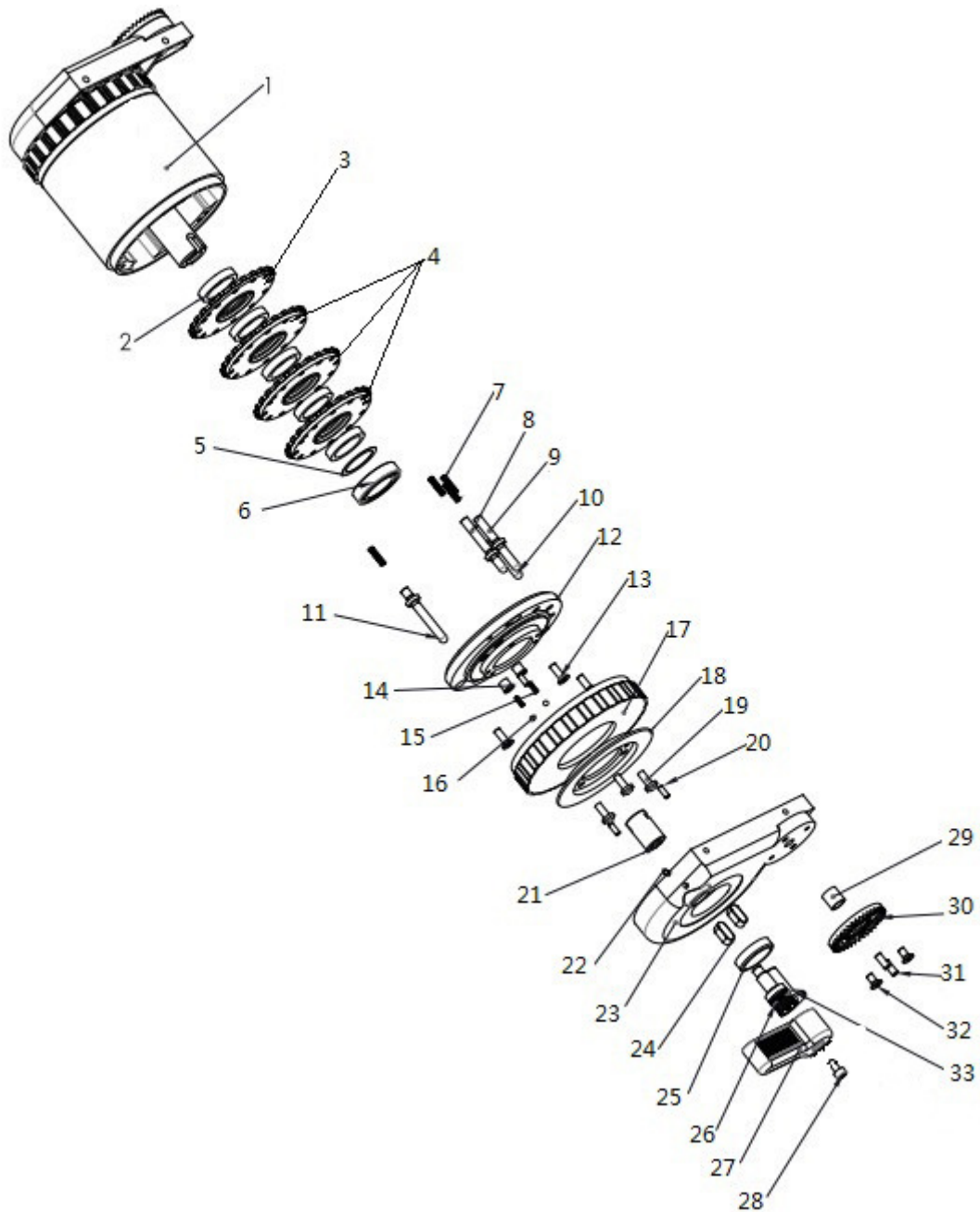


Fig. 5: REACH PLUS 5 Fluid Head —Tilt Brake and Drag Unit Assembly

Item No.	Part No.	Nomenclature	Qty.
Fig. 5	SC351A-00-03	Tilt Brake and Drag Unit Assembly	
1	SC351A-00-02	Balance mechanism assembly (Fig.6)	1
2	SC326-00-03-06	Washer, plain (thick)	5
3	SC349-00-07	Drag disk (thin)	1
4	SC349-00-08	Drag disk (medium)	3
5	SC326-00-03-14	Adjusting washer I (0.1mm)	AR
	SC326-00-03-15	Adjusting washer II (0.2mm)	AR
	SC326-00-03-16	Adjusting washer III (0.5mm)	AR
6	GBT27661804-2Z	Bearing, deep groove ball	1
7	LR03-025	standard spring	4
8	SC349-00-03-04	Locating pillar I	1
9	SC349-00-03-05	Locating pillar II	1
10	SC349-00-03-06	Locating pillar III	1
11	SC349-00-03-07	Locating pillar IV	1
12	SC349-00-03-02	Tilt drag housing	1
13	GBT70NCM4x12	Screw, csk head, hex socket, M4X12	3
14	SC349-00-03-17	Spring sleeve	2
15	LR03-010	standard spring	2
16	SB-3	Steel ball, $\phi 3$	2
17	SC349-00-03-03	L.H. tilt drag knob	1
18	SC326-00-03-04	Tilt brake disk	1
19	GBT818XPM4x10	Screw, pan head, pozidriv, M4x10	3

Item No.	Part No.	Nomenclature	Qty.
Fig. 5			
20	PPD-3x8	Pin, dowel, parallel, uhd steel, A3x8	3
21	SC326-00-03-05	Screwed socket (tilt brake)	1
22	PPD-3x6	Pin, dowel, parallel, uhd steel, A3x6	1
23	SC326-00-03-08	L.H. side plate	1
24	GBT1096-1979	Plain key, parallel, 6X10	2
25	SC326-00-02-19	Steel compression ring	1
26	SC349-00-03-01	Tilt brake shaft	1
27	SC324-00-06-10	Brake knob	1
28	GBT70NYM4x8	Screw, cheese head, hex socket, M4X8	1
29	GB-T24425.1	Steel wire Axle sleeve M8X1d	1
30	SC326-00-02-20	side plate clutch plate	1
31	PPD-3x8	Pin, dowel, parallel, uhd steel, A3X8	2
32	GBT819NCM4x8	Screw, csk head, hex socket, M4X8	2
33	GBT70NCM10x25	Screw, csk head, hex socket, M10X25	1

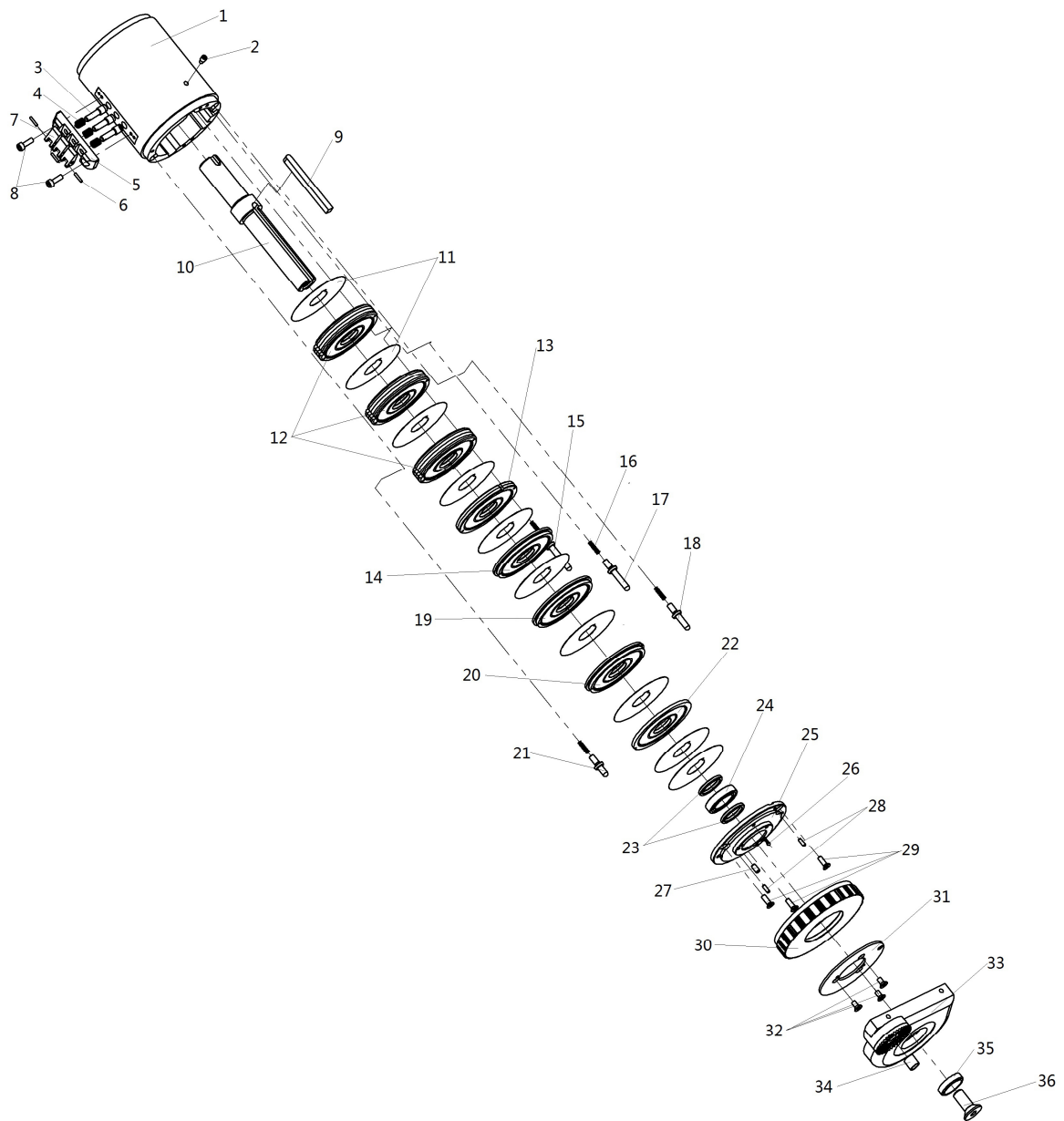


Fig.6 REACH PLUS 5 Fluid Head

—Counterbalance Mechanism Assembly

Item No.	Part No.	Nomenclature	Qty.
Fig. 6	SC351A-00-02	Counterbalance Mechanism Assembly	
1	SC351-00-01-01	Main body	1
2	GBT79 M5 X8	Hexagon socket set screws with dog point M5 X8 (non use)	1
3	SC351A-00-20-02	Stepped control Pin	3
4	SC351A-00-20-04	Stepped control Pin Spring	3
5	SC350A-00-20-01	Stepped control base	1
6	GBT119 A2X10	Pin, dowel, parallel, uhd steel, A2X10	3
7	SC351A-00-20-03	clamping lever	3
8	GBT70NYM4x12	Screw, cheese head, hex socket,M4X12	2
9	SC351-00-02-02	Plain key, parallel	1
10	SC351-00-02-01	Tilt unit shaft	1
11	SC326-00-02-21	Friction bedding	9
12	SC351A-00-19	Stepped control Counterbalance rubber disk	3
13	SC350A-00-02-05	Washer	1
14	SC349-00-17	Counterbalance rubber disk III	1
15	SC349-00-02-13	Counterbalance locating pillar IV	1
16	LR03-025	standard spring	4
17	SC349-00-02-12	Counterbalance locating pillar III	1
18	SC349-00-02-11	Counterbalance locating pillar II	1
19	SC349-00-16	Counterbalance rubber disk II	1
20	SC349-00-15	Counterbalance rubber disk I	1

Item No.	Part No.	Nomenclature	Qty.
21	SC349-00-02-10	Counterbalance locating pillar I	1
22	SC349-00-02-25	Counterbalance rubber disk (large)	1
23	SC349-00-02-14	side plate washer	2
24	GBT276618042Z	Bearing, deep groove ball	1
25	SC349-00-02-01	Counterbalance housing	1
26	LR03-010	standard spring	1
	SB-3&	Steel ball, $\phi 3$	1
27	GBT119 A4X10	Pin, dowel, parallel, uhd steel, A4X10	2
28	PPD-3x8	Pin, dowel, parallel, uhd steel, A3X8	5
29	GBT70NCM4x12	Screw, csk head, hex socket,M4X12	3
30	SC349-00-02-02	Counterbalance knob	1
31	SC349-00-02-17	R.H. pressing disk	1
32	GBT819M4X8	Screw, csk head, hex socket,M4X8	3
33	SC349-00-02-21	R.H. side plate	1
34	GB-T24425.1	Steel wire Axle sleeve M8X1d	1
35	SC326-00-02-19	Steel compression ring	1
36	GBT70NCM10x25	Screw, csk head, hex socket,M10x25	1

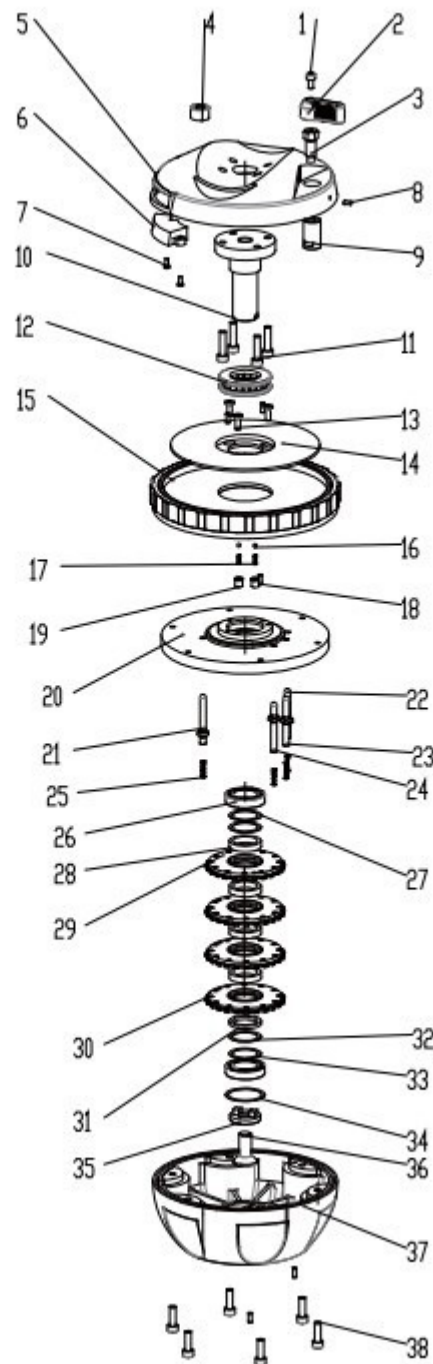


Fig.7.1 REACH PLUS 5 Fluid Head—Pan Unit Assembly -Pan Drag

Item No.	Part No.	Nomenclature	Qty.
Fig. 7	SC351-00-04	Pan Unit Assembly -Pan Drag	
1	S-HCH-4 X8	Screw, cheese head, hex socket, M4x8	1
2	SC324-00-00-01	Brake knob	1
3	SC326-00-01-05	Pan brake shaft	1
4	LB-15x9	Level bubble, Φ15x9	1
5	SC351-00-01-02	Main Body Base	1
6	SC346-00-18	Power Supply	1
7	GBT823-2000	Cross recessed pan head tapping screwsM2X5	2
8	PPD-3x6	Pin, dowel, parallel, uhd steel, A3X6	1
9	SC351-00-01-03	Screwed socket (pan brake)	1
10	SC326-00-01-03	Pan unit shaft	1
11	S-HCH-5X20	Screw, cheese head, hex socket,	4
12	GB51105	thrust ball bearing 51105	1
13	GBT70NCM4x12	Screw, cheese head, hex socket M4x12	3
14	SC351-00-04-03	Pan brake disk	1
15	SC351-00-04-02	Pan drag knob	1
16	SB-3	Steel ball, φ3	2
17	LR03-010	standard spring	2
18	PPD-3x8	Pin, dowel, parallel, uhd steelA3X8	5
19	SC349-00-03-17	Spring housing	2
20	SC351-00-04-01	Pan drag housing	1
21	SC349-00-03-07	Locating pillarIV	1

Item No.	Part No.	Nomenclature	Qty.
Fig. 7			
22	SC349-00-03-06	Locating pillar III	1
23	SC349-00-03-05	Locating pillar II	1
24	SC349-00-03-04	Locating pillar I	1
25	LR03-025	standard spring	4
26	GBT276618042Z	Bearing, deep groove ball, 61804-2Z	2
27	SC326-00-03-14	Adjusting washer I	AR
28	SC326-00-03-06	Washer, plain (thick)	4
29	SC349-00-08	Drag disk (medium)	3
30	SC349-00-07	Drag disk (thin)	1
31	SC326-00-03-07	Washer, plain (thin)	1
32	SC326-00-03-16	Adjusting washerIII	1
33	SC326-00-03-14	Adjusting washerI	3
34	SC349-00-04-03	Bearing washer	2
35	SC326-00-04-07	Steel blocking ring	1
36	GBT70NCM10x25	Screw, cheese head, hex socket M10x25	1
37	SC351-00-04-04	Bowl base	1
38	S-HCH-5 X16	Screw, cheese head, hex socket,	6

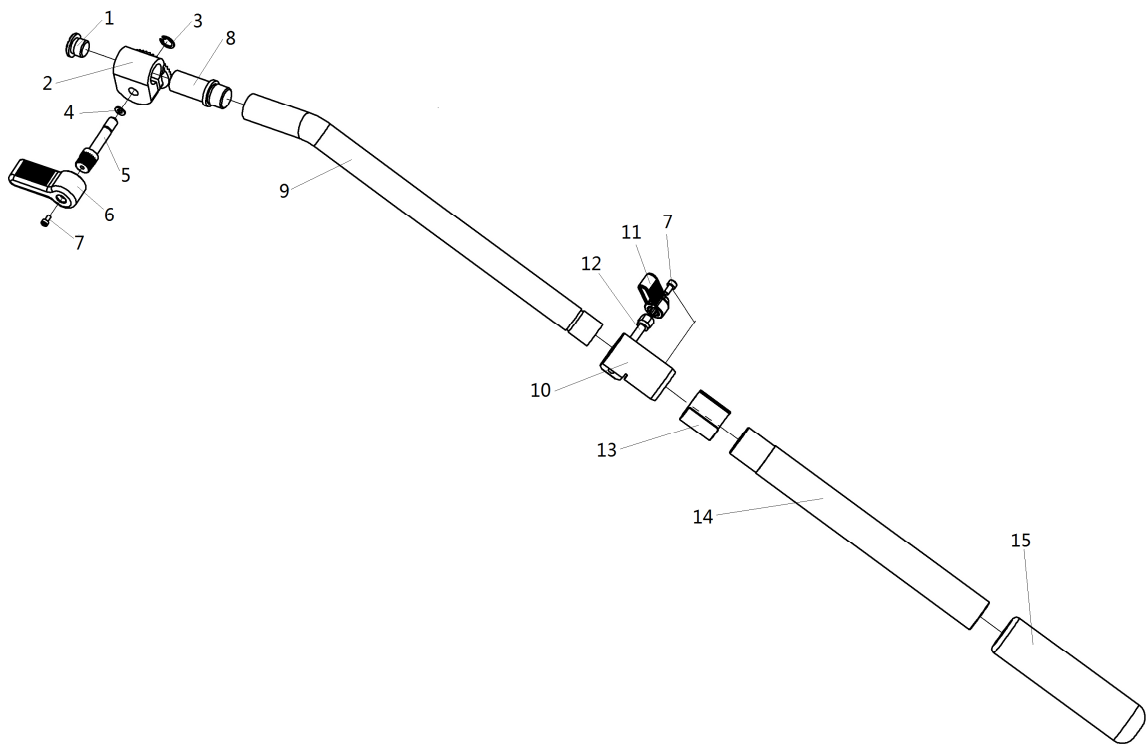


Fig. 8 REACH PLUS 5 Fluid Head—Pan Bar Unit Assembly

Item No.	Part No.	Nomenclature	Qty.
Fig. 8	SC351-00-14	Pan Bar Unit Assembly	
1	SC326-00-07-14	Pan bar screw cap	1
2	SC351-00-06-01	Pan bar locking clamp	1
3	GBT894Z8	Circlip, standard ϕ 8	1
4	GBT97P4	Washer, plain, 4	1
5	SC326-00-07-09	Pan bar clamp shaft	1
6	SC324-00-06-10	Pan bar clamping lever	1
7	GBT70NYM4x8	Screw, cheese head, hexagon socket, M4 X8	2
8	SC351-00-06-06	Pan bar core	1
9	SC351-00-06-02	inner pan bar rod	1
10	SC351-00-14-01	Brake ring	1
11	SC324-00-00-01	Brake knob	1
12	SC318E-01-01-12	Mid-level Spreader brake shaft	1
13	SC351-00-14-03	Pan bar sleeve	1
14	SC351-00-14-02	outer pan bar rod	1
15	SC351-00-06-05	Pan bar grip	1
—16	GB-T 3452.1	Rubber ring, O-sealing, 12.5X1.8	1

SC-EFP/CF150D Tripod Leg Assembly

Illustrated Parts List

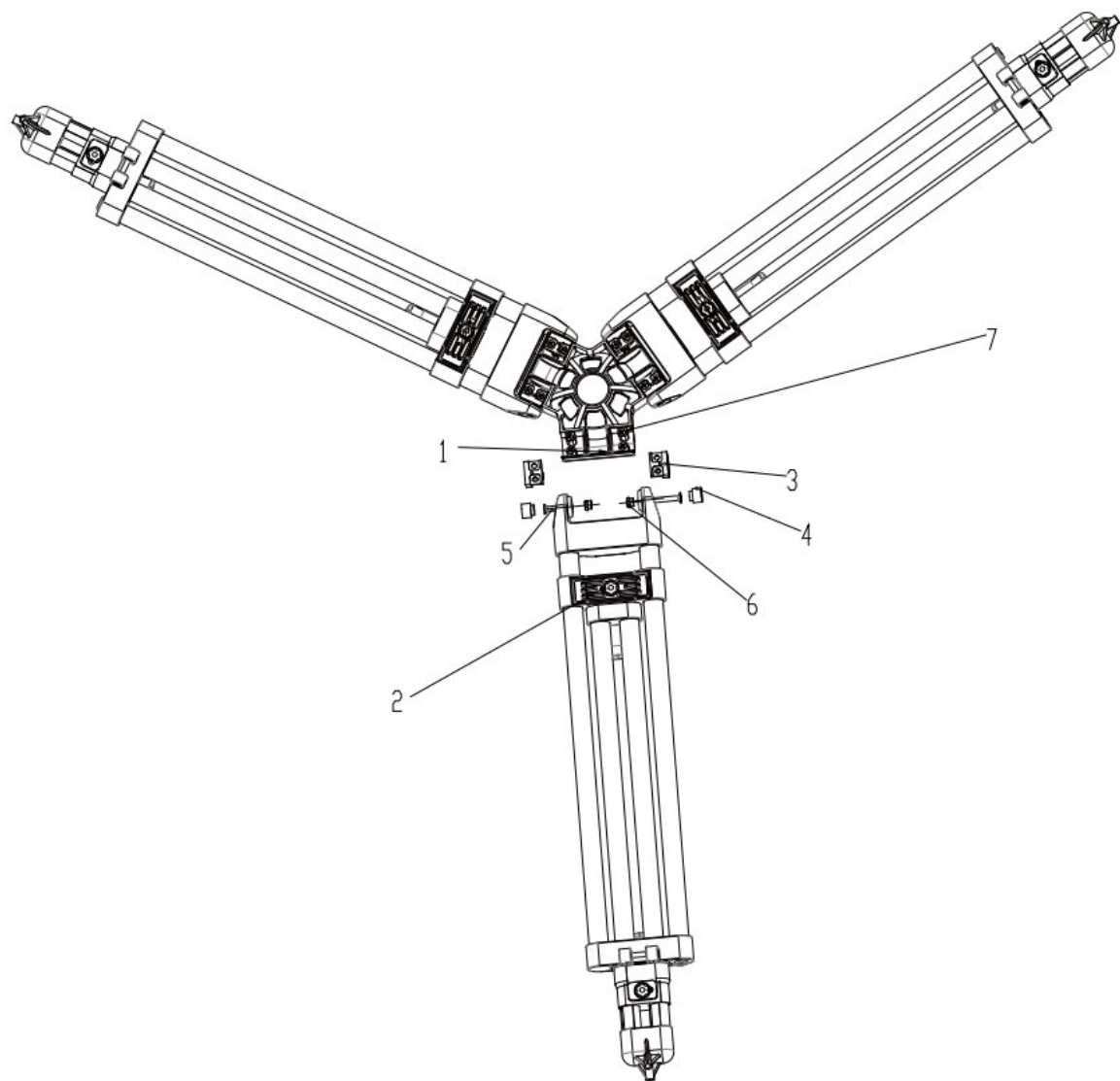


Fig.1 : SC-EFP/CF150DTripod Leg Assembly

Item No.	Part No.	Nomenclature	Qty.
Fig. 1	SC360A-00	EFB Tripod Leg Assembly	
1	SC360A-00-00-01	Tripod Bowl	1
2	SC360A-00-01	Single leg section (Fig.2)	3
3	SC311-00-00-02	Tripod bowl joint	6
4	SC311-00-01-11	Leg top bracket shaft sleeve	6
5	GBT70NCM6X35	Screw, csk head, hex socket,M6x35	6
6	GBT889M6	tightening screw, M6	6
7	GBT823PM5X12	Screw, pan head, pozidriv, M5x12	12

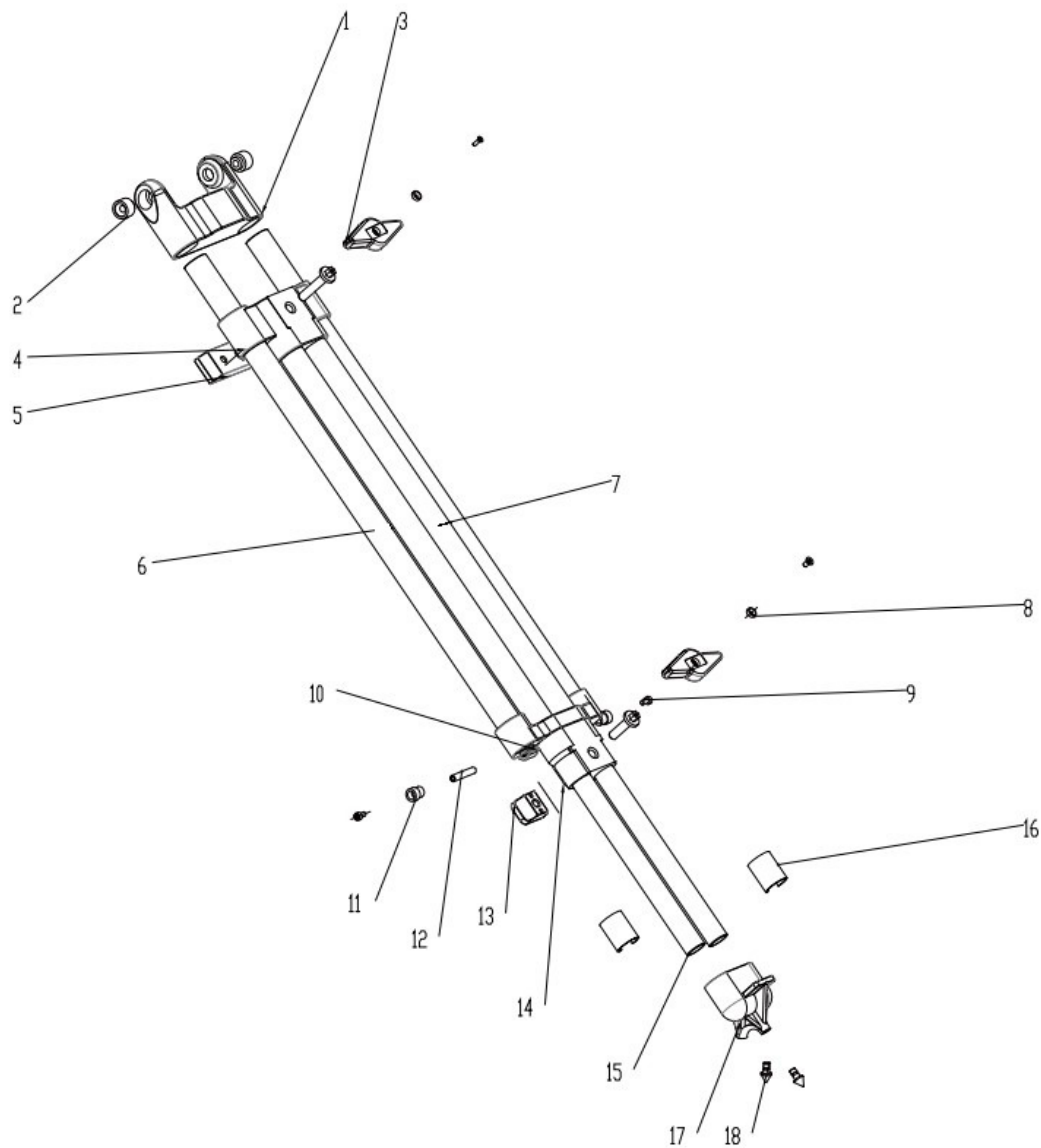


Fig.2: SC-EFP/CF150D Single Leg Section Assembly

Item No.	Part No.	Nomenclature	Qty.
Fig. 2	SC360A-00-01	Single Leg Section Assembly	
1	SC311-00-01-01	Tripod Bowl	1
2	SC311-00-01-11	Tripod Bowl shaft sleeve	2
3	SC360A-00-01-03	Clamping knob	2
4	SC360A-00-01-04	upper locking sleeve	1
5	SC360A-00-01-01	upper locking plate	1
6	SC311E-00-01-32	Outer leg tube I	2
7	SC311E-00-01-33	Outer leg tube II	2
8	SC360A-00-01-07	washer	2
9	GBT701M4x8	Screw, cheese head, hex socket, M4x8	2
10	SC311-00-01-03	Sliding Cube	1
11	SC318-00-01-28	Mid spreader fixing sleeve	2
12	SC318E-00-01-42	Mid spreader fixing shaft	1
13	SC360A-00-01-02	Lower lock plate	1
14	SC360A-00-01-05	Lower locking sleeve	1
15	SC311E-00-01-34	inner leg tube	2
16	SC311-00-01-17	protective housing	2
17	SC311-00-01-20	Feet sleeve support	1
18	SC317-00-01-13	Feet pin	2
19	SC311-00-01-04	Lower locking sleeve	1

Floor Spreader Illustrate Parts List

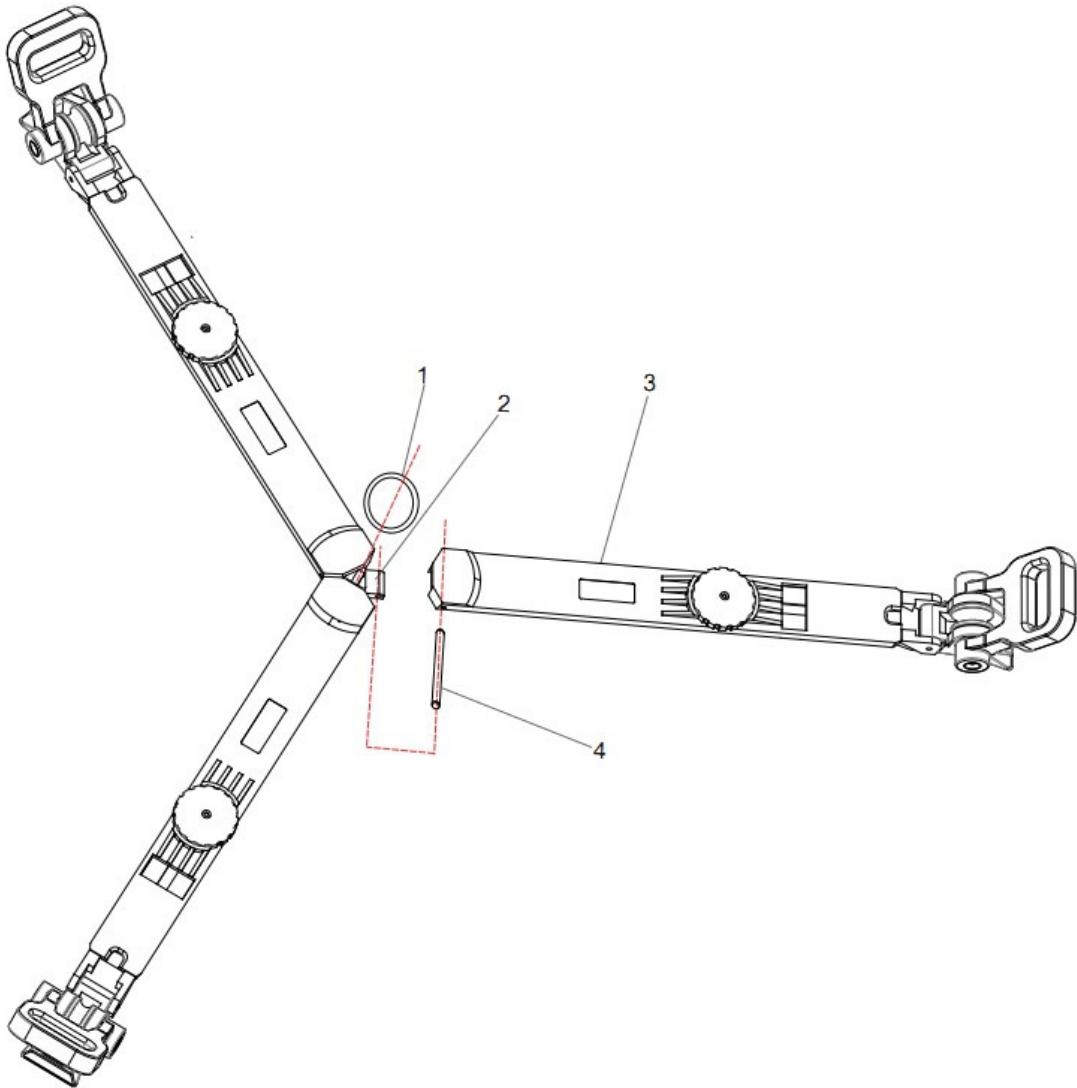


Fig.1:Floor Spreader Illustrate Parts List

Item No.	Part No.	Nomenclature	Qty.
Fig. 1	SC318E-02	Floor Spreader	
1	YSH24	Ring $\Phi 24$	1
2	SC318E-02-00-10	Connecting core	1
3	SC317-00-01	Spreader unit (Fig.2)	3
4	GBT119 B4x40	Pin, dowel, parallel, B4x40	3

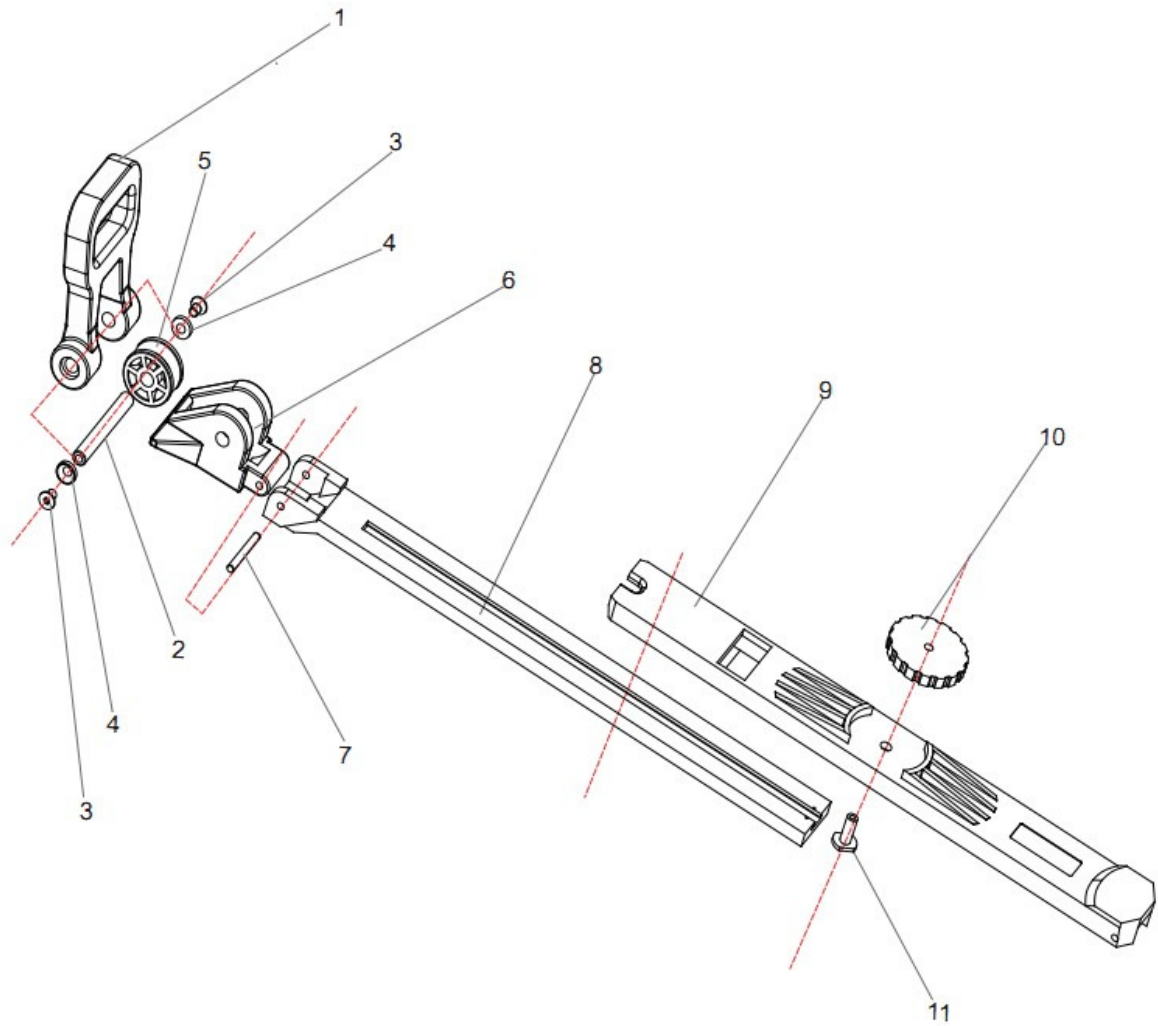


Fig. 2: Floor Spreader Single Leg Assembly

Item No.	Part No.	Nomenclature	Qty.
Fig. 2	SC317-00-01	Floor Spreader Single Leg Assembly	
1	SC317-01-00-07	Retaining strap	1
2	SC317-01-00-04	Shaft	1
3	GBT703 M5x10	Screw, csk head, hex socket, M5x10	2
4	SC317-01-00-06	Blocking washer	2
5	SC317-01-00-03	Spreader wheel	1
6	SC317-01-00-01	Foot base	1
7	GBT119 B4x40	Pin, dowel, parallel, B4x40	3
8	SC318-02-01-02	Inner leg	1
9	SC318-02-01-03	Outer leg	1
10	SC318E-02-01-06	Clamping knob II	1
11	SC318E-02-00-04	Clamping screw	1

Mid-level Spreader Unit Assembly

Illustrated Parts List

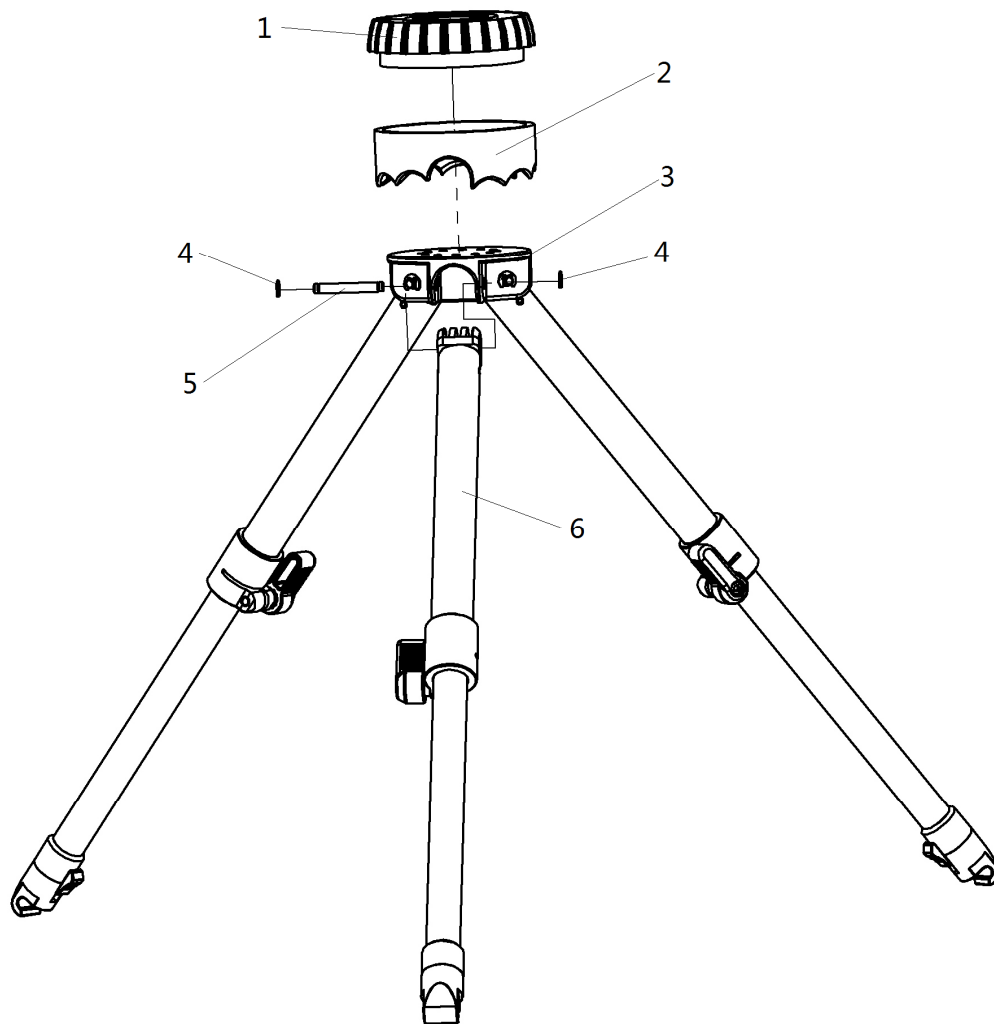


Fig. 1 318 Mid-level Spreader Unit Assembly

Item No.	Part No.	Nomenclature	Qty.
Fig. 1	SC318E-01A	Mid-level Spreader Unit Assembly	
1	SC318-01-00-02	Clamping knob	1
2	SC318-01-00-03	Blocking Ring	1
3	SC318-01-00-01	central frame for knob	1
4	GB/T896	open-end Blocking washer 4	6
5	SC318-01-00-04	shaft	3
6	SC318E-01-01A	Mid-Level Spreader leg	3
—7	SC315-00-08-03	spring	1
	SB-5	Steel ball, $\phi 5$	1
—8	GBT119B3x6	Pin, dowel, parallel, 3X6	3

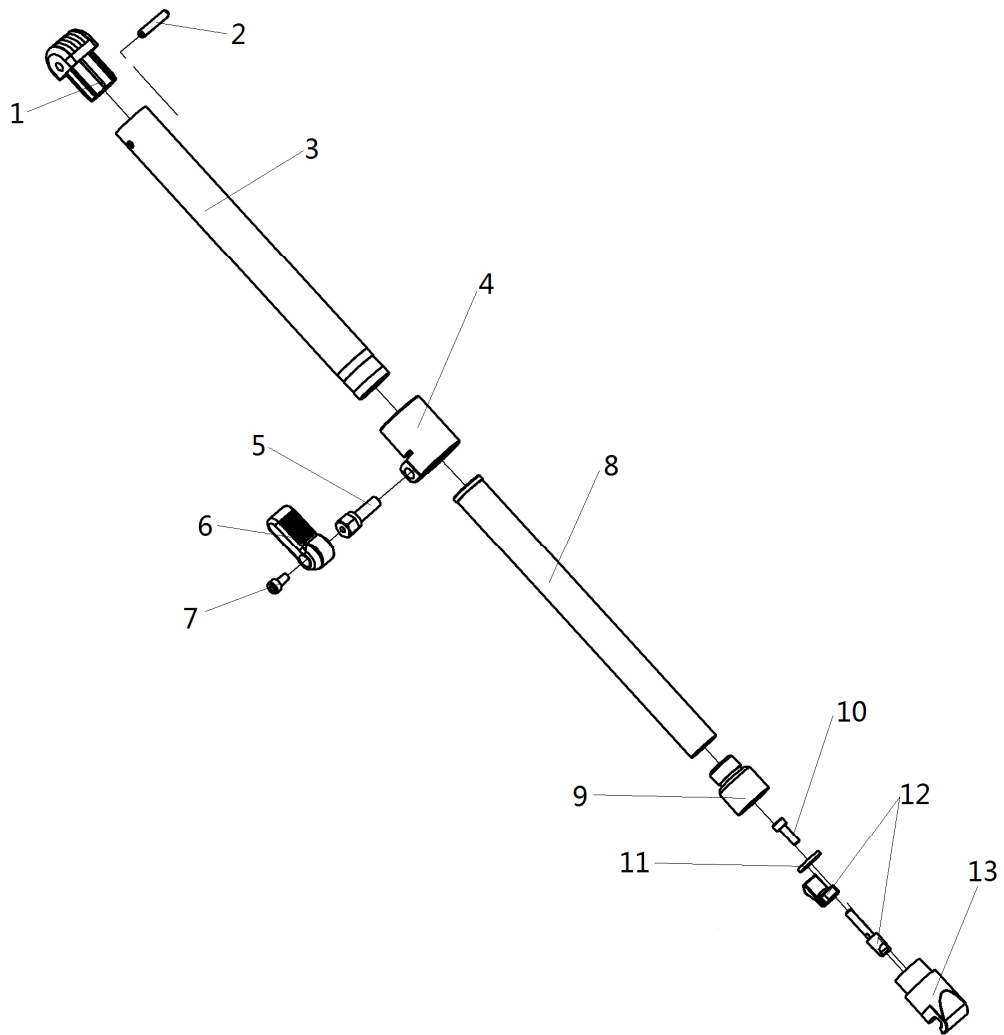


Fig.2: Mid-level Spreader Single Leg Assembly

Item No.	Part No.	Nomenclature	Qty.
Fig. 1	SC318E-01-01A	Mid-level Spreader Single Leg Assembly	
1	SC318-01-01-01	Mid-level Spreader Stopper	1
2	GBT879SP4X22	Pin, spring-type, slotted, 4X22	1
3	SC318E-01-01-11	Mid-level Spreader outer tube	1
4	SC318E-01-01-13	Mid-level Spreader brake ring	1
5	SC318E-01-01-12	Mid-level Spreader brake shaft	1
6	SC324-00-00-01	Brake knob	1
7	GBT70.1 M4X8	Screw, cheese head, hex socket, M4x8	1
8	SC318E-01-01-10	Mid-level Spreader inner tube	1
9	SC318E-01-01-05A	Mid-level Spreader shaft	1
10	GBT70.1 M4X12	Screw, cheese head, hex socket, M4X12	1
11	SC318E-01-01-20	locating washer	1
12	SC318E-01-01-18	Mid-level Spreader knob	1
13	SC318E-01-01-17A	Mid-level Spreader Connecting core	1